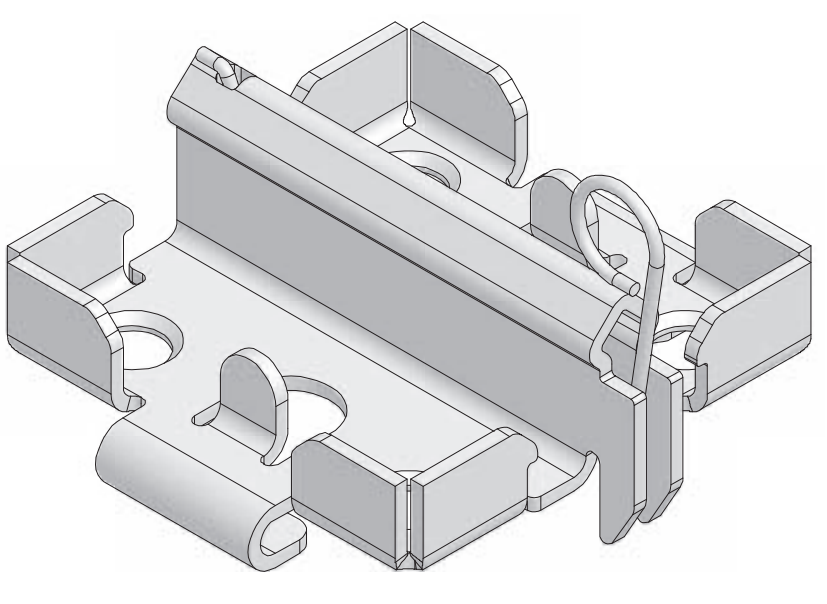


Tips for ensuring smooth construction progress

- Before assembly, secure the working area with safety-relevant equipment.
- If possible, start the assembly in a rectangular corner with walls in both directions.
- Preset the required prop length = height under the slab - approx. 20 cm.
- Use Shuttering Aid GFA for shuttering and striking the elements.
- Align the props along the wall so that the handles can be used without difficulty.
- In order to mount the Wall Holder GFW, at first a tie rod with counter nut has to be inserted through the tie hole from the rear of the wall. Then the Wall Holder GFW can be mounted.
- For providing a better understanding, detailed illustrations which have possibly not been featured in these detailed drawings must nevertheless be available.

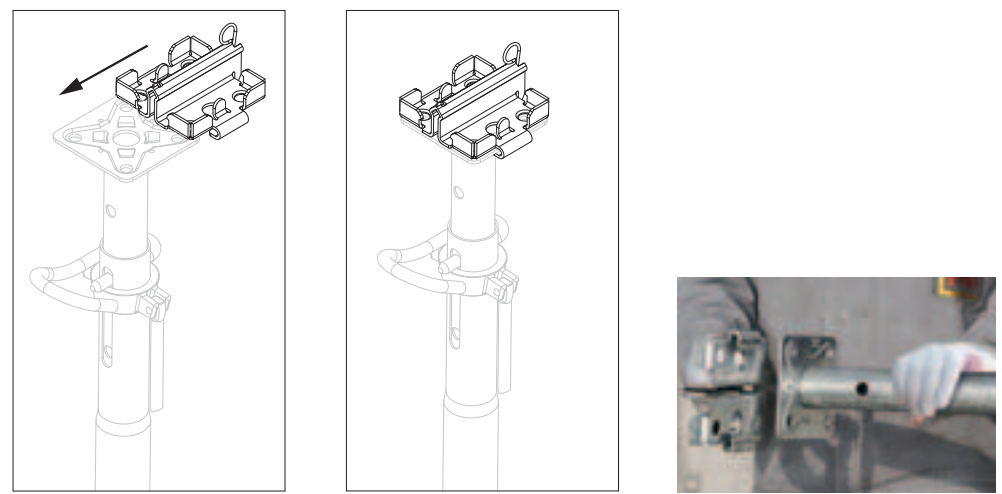
• This poster presents only part of the intended use of the GRIDFLEX system. More information is available in the assembly instructions.



GRIDFLEX

Fast, efficient and safe

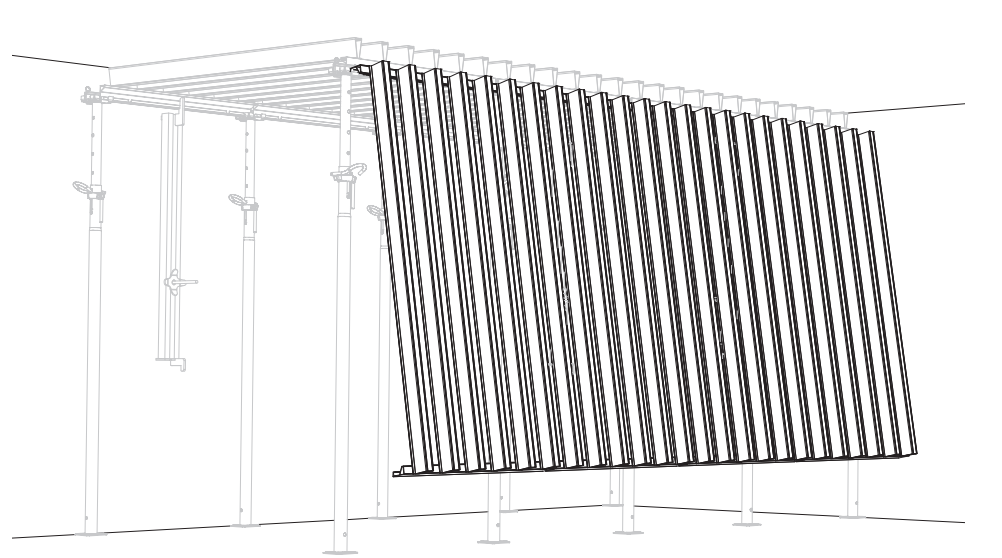
Assembly of the prophead



Slide the Prophead GFH onto the end plate of the prop until it clicks into place.

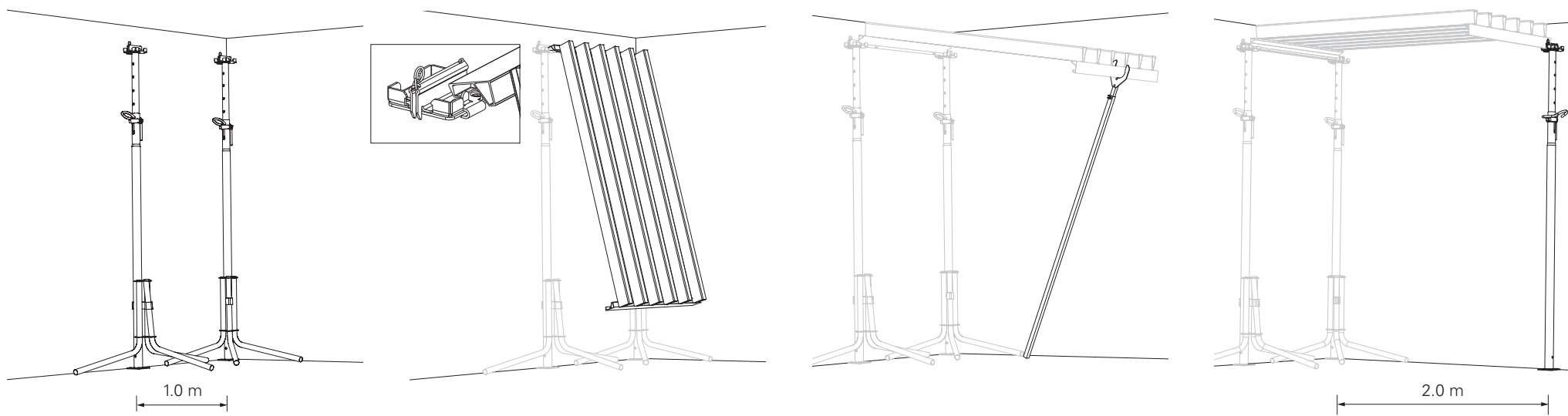
The drawings shown refer to slabs with a thickness of ± 33 cm (with L/300).

Assembly of the following rows



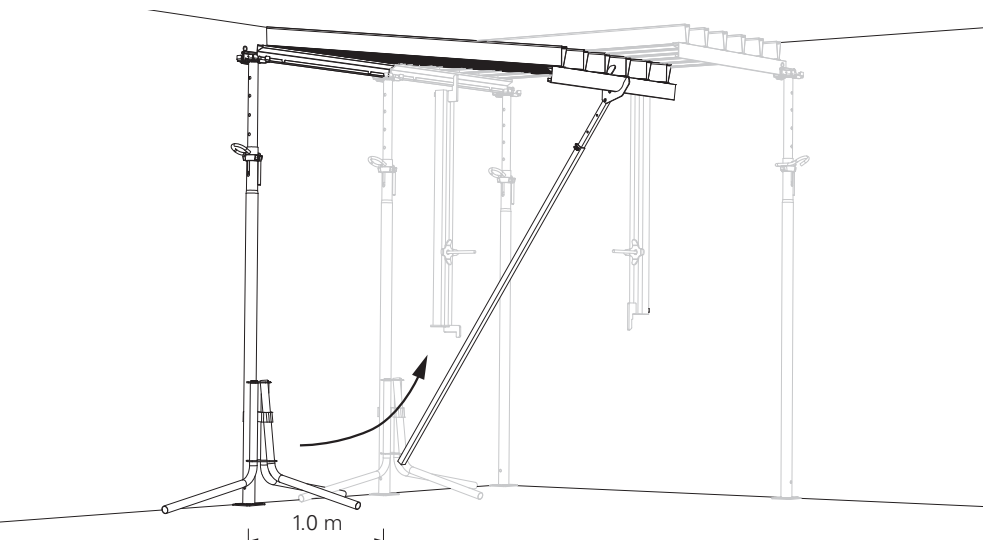
Second row
 1 Hook in Standard Panel GFF.
 2 Swivel up the first Standard Panel GFF by means of the Shuttering Aid GFA and then support the free end with the shuttering aid.

Assembling the first element

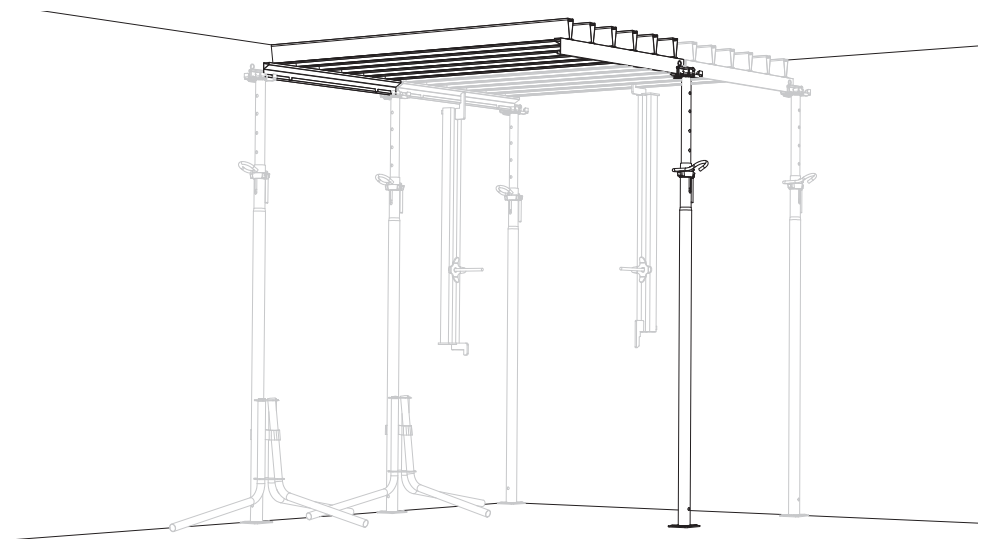


1 Set up two props with propheads in a corner and secure with the help of tripods (spacing: 1.00 m).
 2 Hook in Panel GFF (white) at one end.
 3 Swivel up the element by means of the Shuttering Aid GFA and then support the free end with the shuttering aid.
 4 Attach a third prop together with prophead in a diagonal position to the end of the element, and then bring it into a vertical position; spacing 2.0 m. Shuttering Aid GFA is subsequently removed.

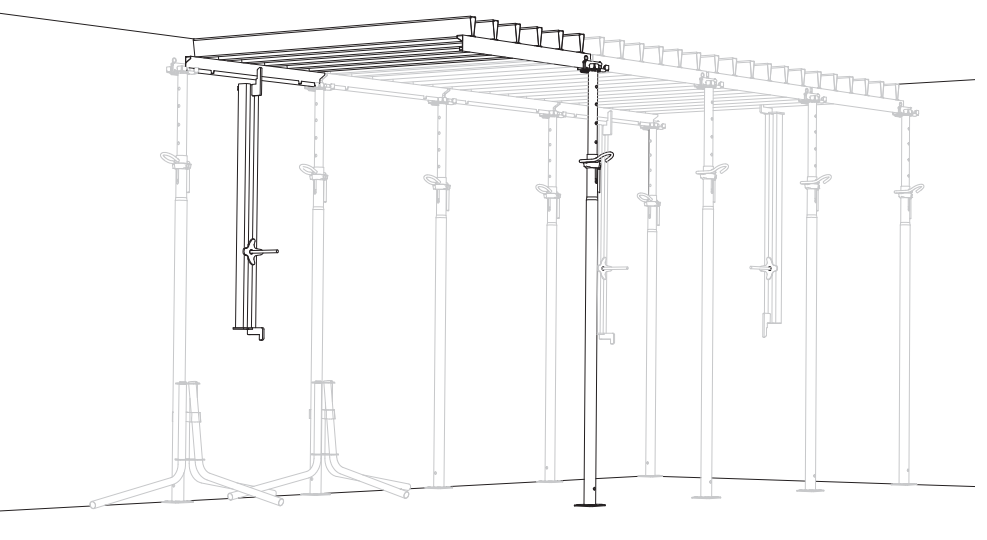
Assembling the first row



First row - always install elements across the complete width before starting with the next row.
 1 Position the prop together with the prophead.
 2 Mount Standard Element GFF.
 3 Swivel up the element by means of the Shuttering Aid GFA and then support the free end with the shuttering aid.
 4 Screw in prop with prophead into the end pieces of both Standard Panels GFF and bring into a vertical position. The tripods can be re-used.

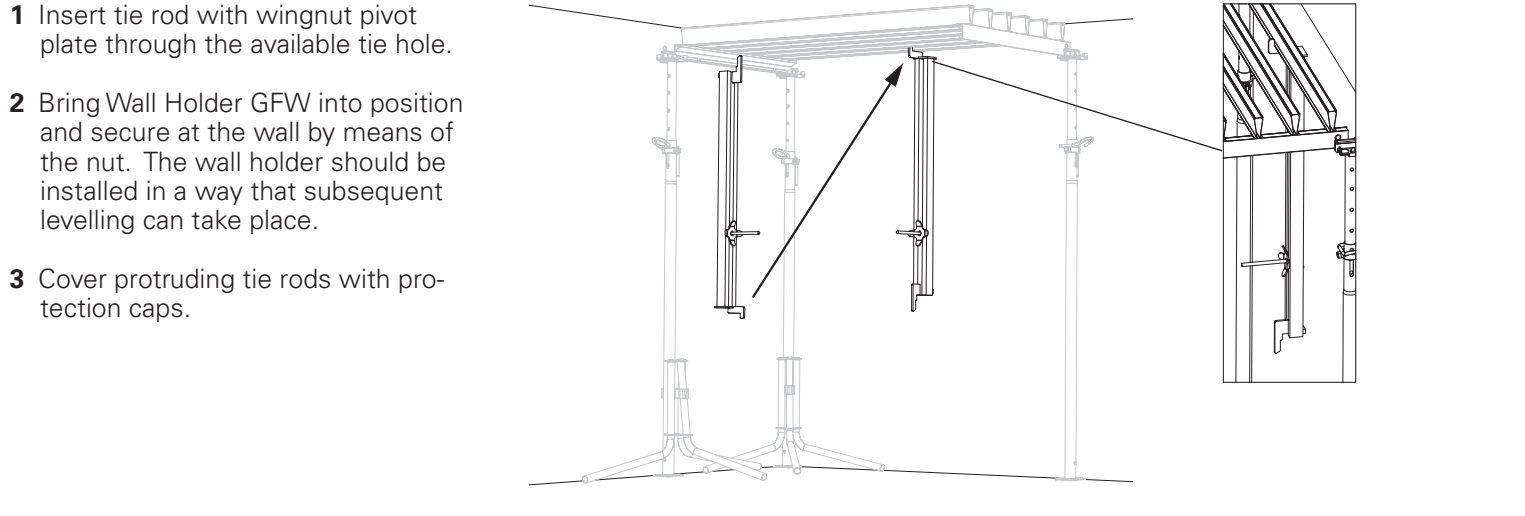


4 Screw in prop with prophead into the end pieces of both Standard Panels GFF and bring into a vertical position. The tripods can be re-used.



5 Attach horizontal mounting. Install Wall Holder GFW laterally in at least every third bay.

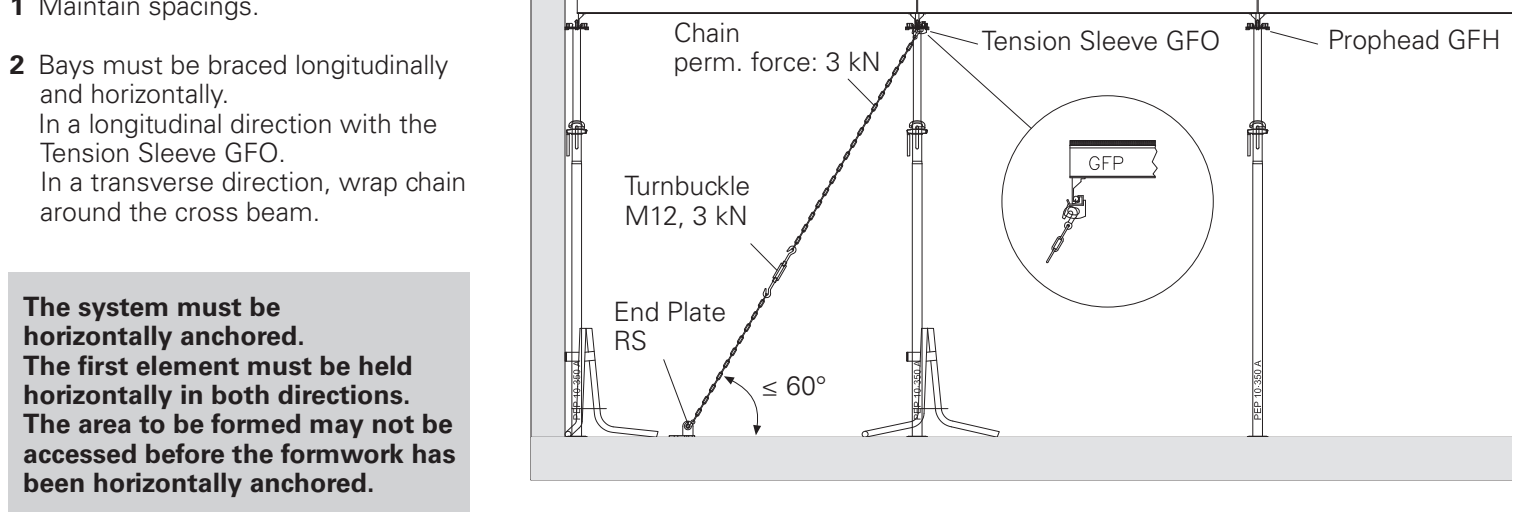
A Horizontal anchoring with wall holders



1 Insert tie rod with wingnut and plate through the available tie hole.
 2 Bring Wall Holder GFW into position and secure at the wall by means of the nut. The wall holder should be installed in a way that subsequent levelling can take place.
 3 Cover protruding tie rods with protection caps.

The system must be horizontally anchored. The first element must be held horizontally in both directions. The area to be formed may not be accessed before the formwork has been horizontally anchored. Persons are not to remain under non-anchored slab formwork.

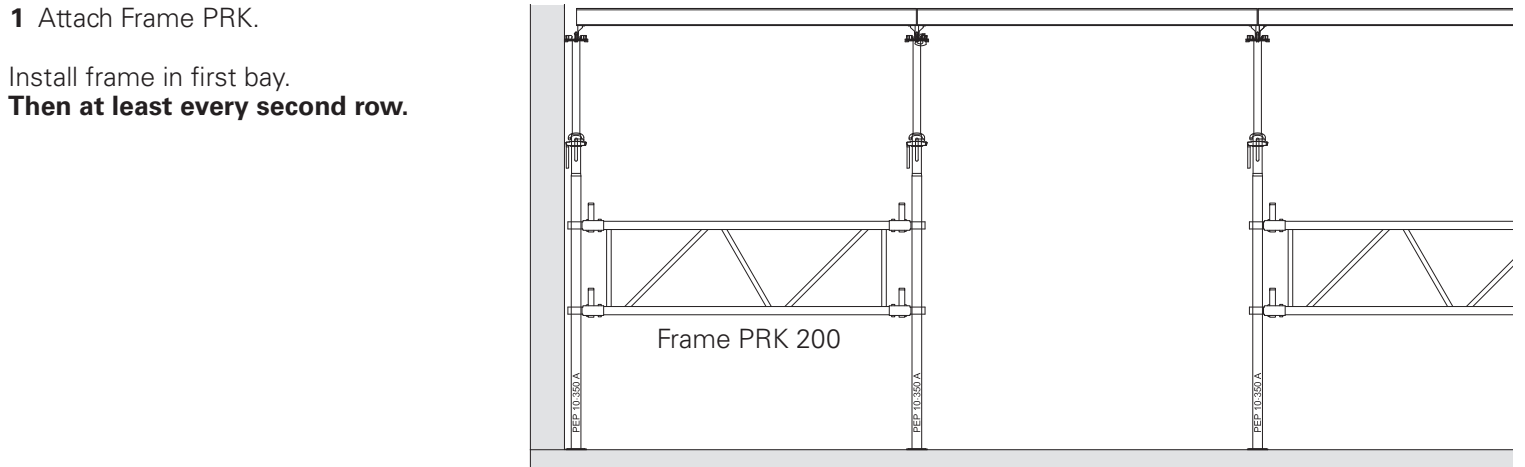
B Horizontal mounting with chain



1 Maintain spacings.
 2 Bays must be braced longitudinally and horizontally. In a longitudinal direction with the Tension Sleeve GFO. In a transverse direction, wrap chain around the cross beam.

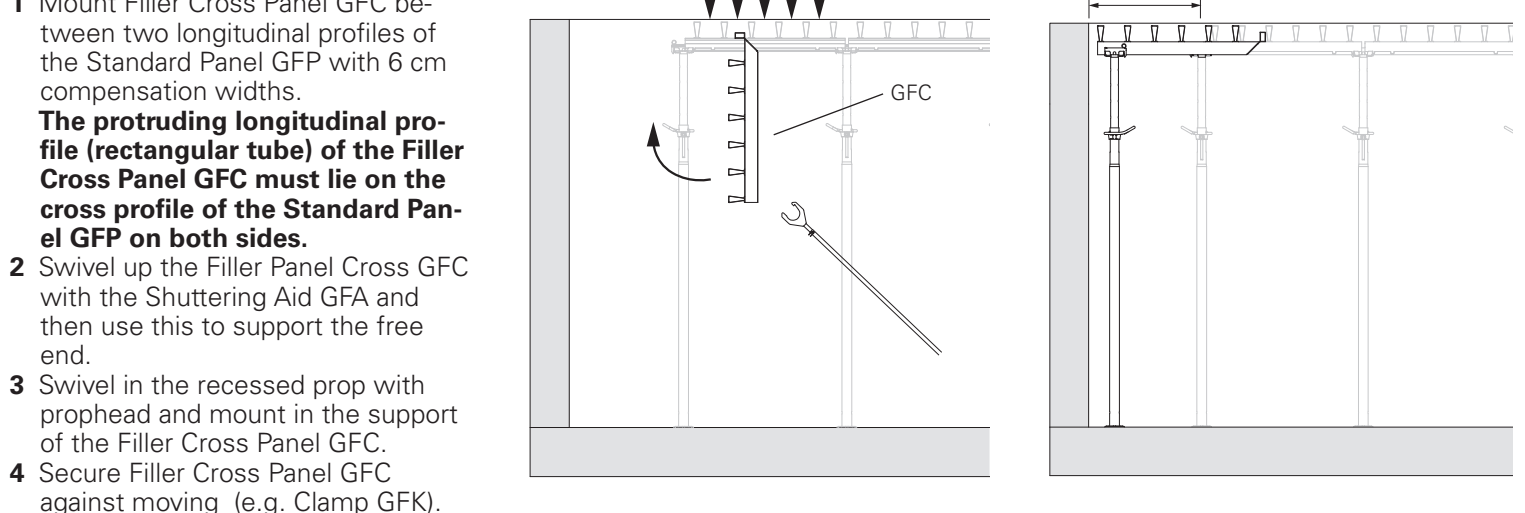
The system must be horizontally anchored. The first element must be held horizontally in both directions. The area to be formed may not be accessed before the formwork has been horizontally anchored.

C Assembly help with Frame PRK



1 Attach Frame PRK.
 Install frame in first bay. Then at least every second row.

Lateral compensation



1 Mount Filler Cross Panel GFC between two longitudinal profiles of the Standard Panel GFF with 6 cm compensation width. The protruding longitudinal profile (rectangular tube) of the Filler Cross Panel GFC must lie on the cross profile of the Standard Panel GFF on both sides.
 2 Swivel up the Filler Panel Cross GFC with the Shuttering Aid GFA and then use this to support the free end.
 3 Swivel in the recessed prop with prophead and mount in the support of the Filler Cross Panel GFC.
 4 Secure Filler Cross Panel GFC against moving (e.g. Clamp GFK).



Striking

- Follow instructions**
- 1 Filler Panels Cross GFC (red)
 - 2 Standard Panels GFF (white)
 - 3 Filler Panels Longitudinal GFL (yellow)
- 1 Remove formlining sheets one after the other, then clean and store.

Changing direction



The direction of the standard panel can be changed.
 1 Install prop with prophead with a spacing of 1.00 m and secure with tripod.
 2 Hook in the element vertically, swivel up using the Shuttering Aid GFA and then support the free end with the shuttering aid.
 3 After this replace shuttering aid by installing prop with prop head.
 4 Secure element against lifting.

Shuttering of columns



The filler panels facilitate easy and simple shuttering of columns.

Installing the formlining



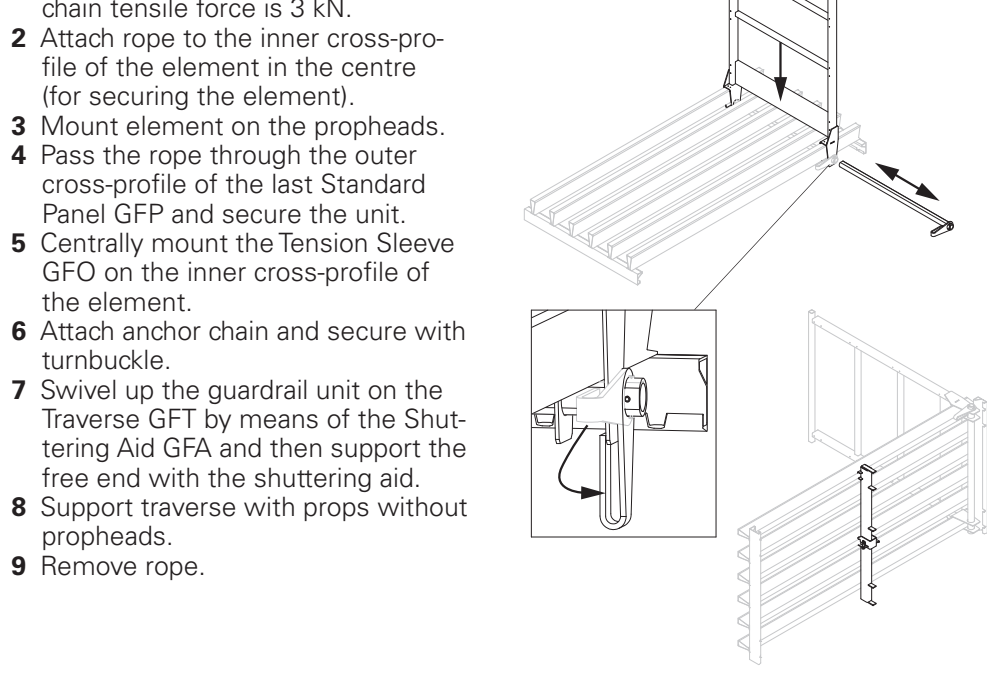
Install the formlining sheets after mounting all elements along with the safety equipment and carrying out levelling.
 Lay sheets at right angles to the elements (in order to facilitate striking).
 With increased requirements, fix the formlining in the corners with nails.
 PERI recommends fixing the formlining sheets with twisted nails, size 2.0/2.2 x 33.

Safety at the slab edge

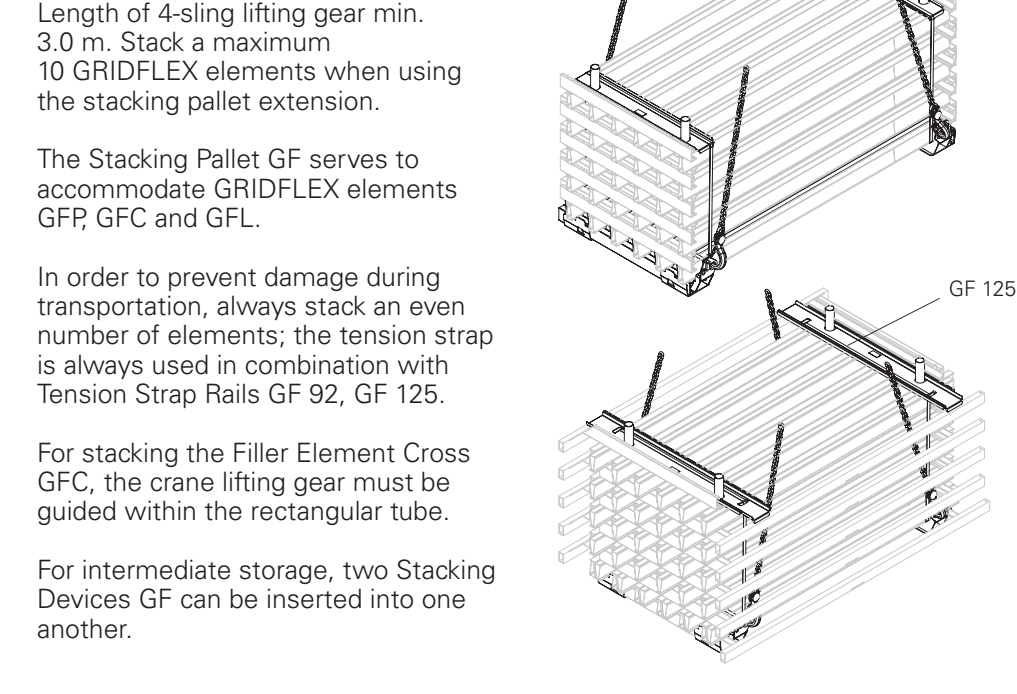
- 1 Pull out the tube on the guardrail.
- 2 Position guardrail on the element.
- 3 Push in tube and secure guardrail by turning the tube at the handle. Nail guardrail to the element.
- 4 Measure distance of the props to the slab edge and mount Traverse GFT accordingly.
- 5 Brace the cantilevers with chains; See B Horizontal mounting with chain.



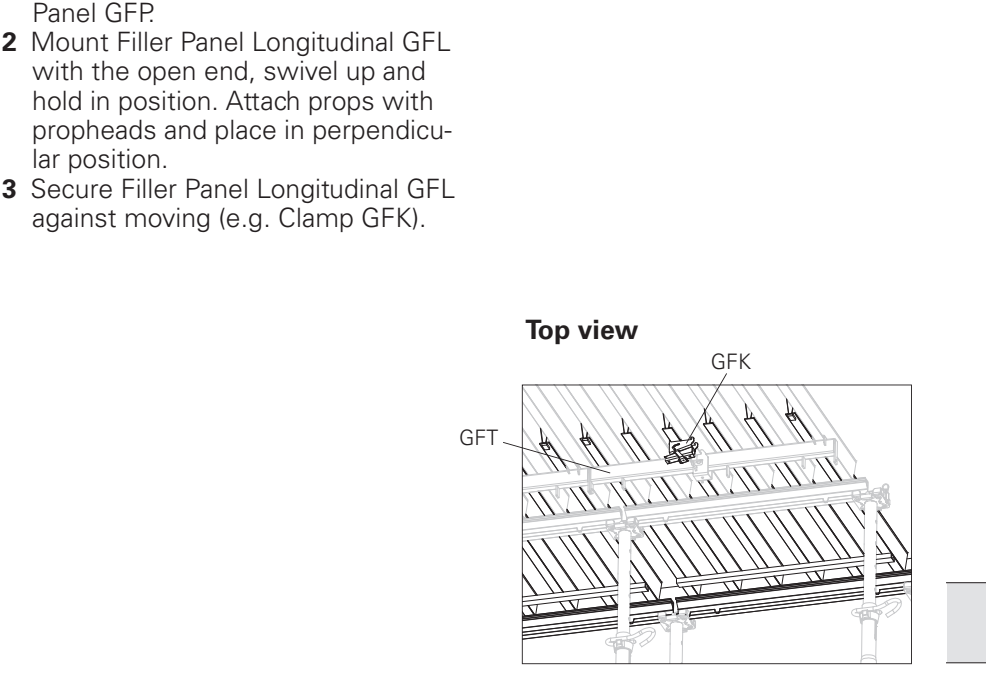
Storage and transportation



Length compensation



Length compensation



Length compensation



Length compensation



GRIDFLEX Slab Formwork

Poster



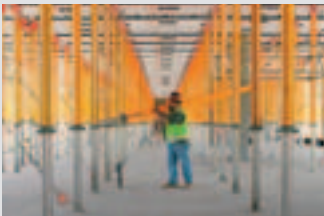
The optimal System for every Project and every Requirement



Wall Formwork



Column Formwork



Slab Formwork



Climbing Systems



Tunnel Formwork



Bridge Formwork



Shoring Systems



Construction Scaffold



Facade Scaffold



Industrial Scaffold



Access



Protection Scaffold



System-Independent Accessories



Services



PERI GmbH
Formwork Scaffolding Engineering
 Rudolf-Diesel-Strasse 19
 89264 Weissenhorn
 Germany
 Tel. +49 (0)7309.950-0
 Fax +49 (0)7309.951-0
 info@peri.com
 www.peri.com